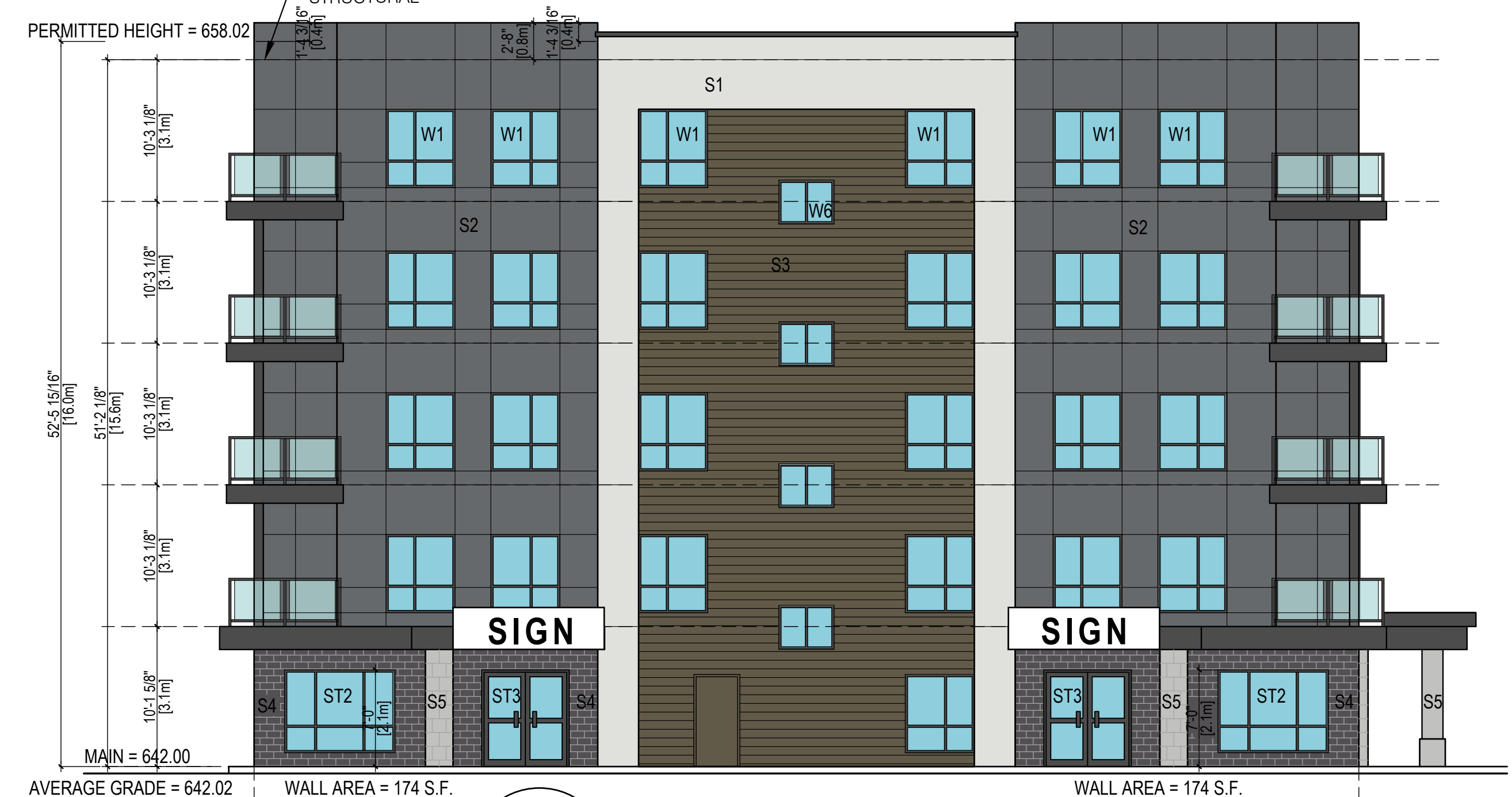
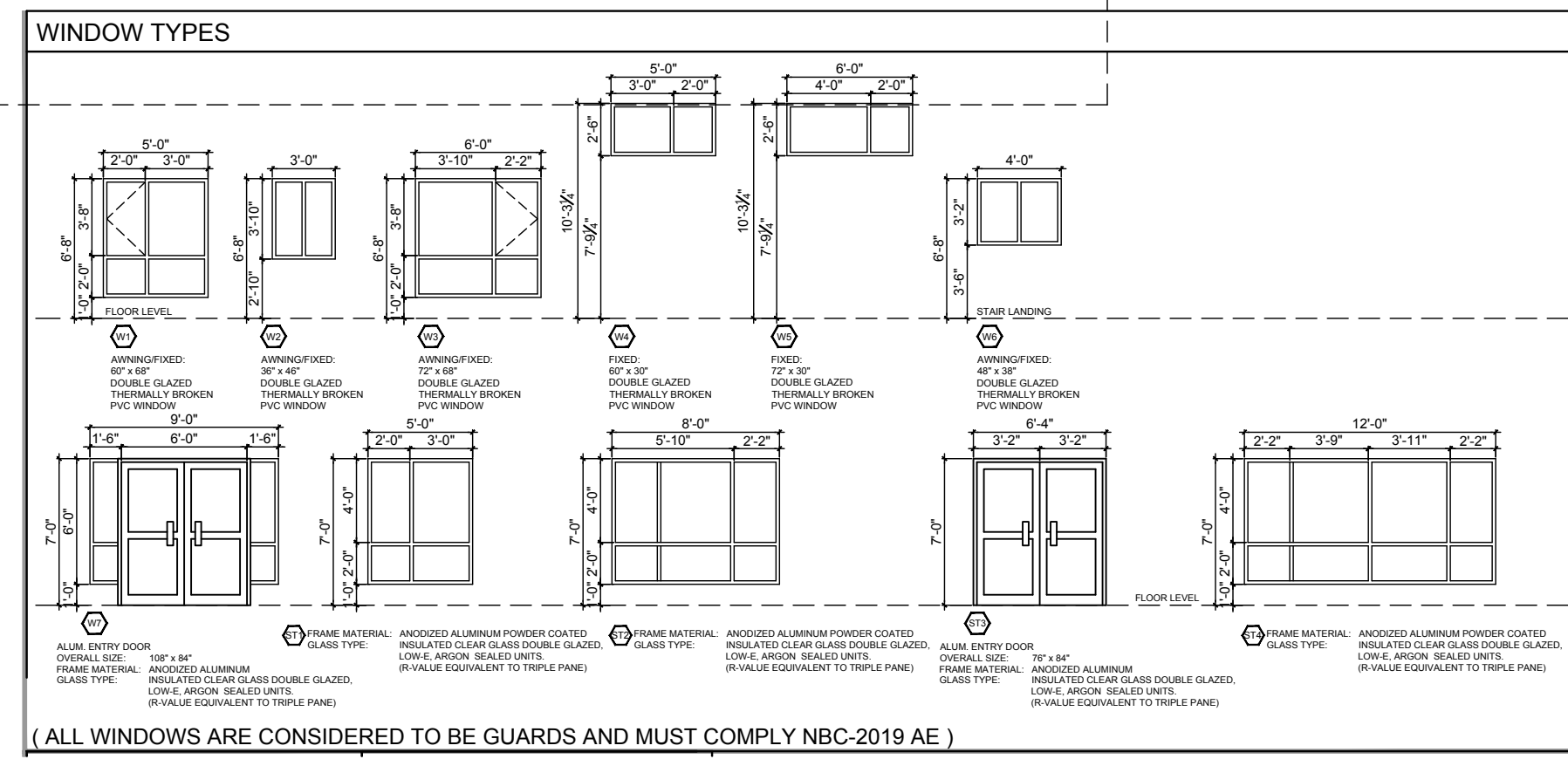




1 SOUTH ELEVATION
A5.0 1/8" = 1'-0"



2 EAST ELEVATION
A5.0 1/8" = 1'-0"



EXTERIOR FINISH SCHEDULE		SCHEDULE NOTES	
01	JAMES HARDIE PANEL - ARCTIC WHITE	1.	HANDLE, STORE, INSTALL OR APPLY, CLEAN AND PROTECT PRODUCTS AS PER MANUFACTURERS SPECIFICATIONS, RECOMMENDATIONS AND STANDARDS.
02	JAMES HARDIE PANEL - NIGHT GRAY	2.	PROVIDE AND INSTALL PREFINISHED METAL FLASHING ABOVE ALL OPENINGS (DOOR, WINDOWS, LOUVERS, VENTS ETC.).
03	JAMES HARDIE BOARD - TIMBER BARK	3.	PREFINISHED METAL FLASHING SHALL: EXTEND AT LEAST 2" UPWARDS, HAVE A MINIMUM 6% POSITIVE SLOPE, HAVE END-DAMS NOT LESS THAN 1" HIGH, LAP A MINIMUM OF 1/2" VERTICALLY OVER THE BUILDING ELEMENT BELOW AND TERMINATE WITH A DRIP THAT EXTENDS AT LEAST 1/4" OUT FROM THE FACE OF THE BUILDING ELEMENT.
04	IXL ONYX IRONSPOT BRICK	4.	PROVIDE AND INSTALL PREFINISHED METAL FLASHING AT ALL HORIZONTAL JOINTS WITH DISSIMILAR EXTERIOR FINISH MATERIALS.
05	IXL PORTAGE BAY STONE	5.	USE ARCHITECTURAL TRIM ACCESSORIES AT ALL RECEPTACLES AND LIGHTING LOCATIONS.
ROOF FASCIA /RWL - PREFINISHED BLACK ALUM.		6.	ALL COLOURS AND FINISHES TO BE CONFIRMED WITH OWNER PRIOR TO ORDERING.
RAILINGS W/ GLASS - PREFINISHED BLACK ALUM. W/ GLASS		7.	REFER TO A13.0 FOR WINDOW & DOOR SCHEDULES
BALCONY FASCIA - PREFINISHED BLACK ALUM.			
WINDOWS - PVC W/ ALUM. CLAD COLOR: BLACK			
METAL EXIT DOORS - COLOUR: MATCH WALL COLOR			



3 NORTH ELEVATION
A5.0 1/8" = 1'-0"



4 WEST ELEVATION
A5.0 1/8" = 1'-0"